

## amanTag®

### People safety and asset protection systems

An advanced identification and localisation system that has a wide range of applications. amanTag provides a real-time monitoring system that is secure and easy to implement. High performance tags protect valuable exhibits in museums, paintings in galleries, track high risk wandering patients, safety for workers in hazardous environments and the protection of babies on a maternity ward. Protect and be safe with amanTag.

### Locator with transceiver

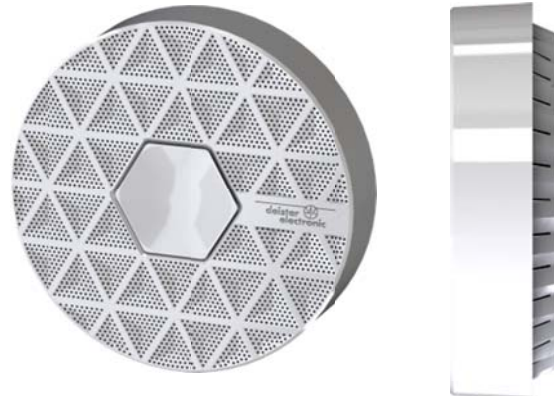
The locator LCA 500 T is a major component in the amanTag Human Protection System. It simultaneously receives and processes the signals from the amanTag Human Protection Transponder. It transmits a constant wake-up signal with a location code to a range of up to 5 m.

An 868 MHz transceiver is integrated for bidirectional communication with the transponders.

The locator is able to operate as a standalone device or online. The LCA 500 extends the wake-up field of the location code by up to 5 m synchronously with the LCA 500 T, should you wish to extend the wake-up range (locator field).

### Your benefits at a glance:

- **Easy installation**
- **Bidirectional communication**
- **Wake-up field extension possible with the LCA 500 or LCA 700.**
- **Standalone and online operation**
- **Modern, compact construction**
- **Multiple devices can be combined**



### Technical data

<b>Dimensions ØxH:</b>	170 x 45 mm
<b>Material:</b>	ASA
<b>Protection class:</b>	IP40
<b>Operating temperature:</b>	+5...+50°C
<b>Relative humidity:</b>	5...95%, non-condensing
<b>Power requirement:</b>	12...28 VDC / 1A
<b>Frequencies:</b>	
Wake-up frequency:	125 kHz
Working frequency:	868 MHz
<b>Wake-up range:</b>	Up to 5 m
<b>Interfaces:</b>	RS485 1x TCP/IP (optional)
<b>Switching outputs/inputs:</b>	1x input 2x isolated relay outputs, 30 VDC / 1A