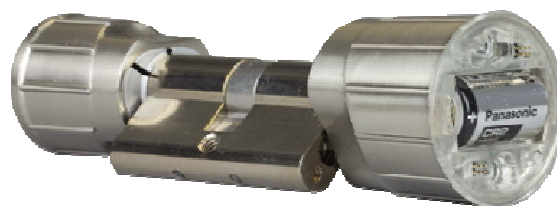


## doorLoxx® – Digital Locking Systems

An access control system that can be fitted to standard mechanical locks allowing them to be wirelessly connected without the need to modify the door. doorLoxx digital locking components are available as battery powered digital cylinders and smart handles. doorLoxx can form part of a new or existing access control system with no need for wires to the door, exceptional long battery life combined with the innovative flexibility to adapt the product at point of installation to fit many types of door puts doorLoxx at the top in its class.



### Digital cylinder

The digital cylinder is a universal-type, quickly installed door release element. A specially developed modular extension system makes it possible to extend both sides of the cylinder by up to 15 mm in 5 mm increments respectively. That means it is possible to create 76 different cylinder lengths with just 5 standard cylinder bodies. For installation purposes it is possible to remove the rotary knob on both sides from the shafts. The designed-in ability to totally dismantle this cylinder opens up new storage and service options. It is possible to switch each cylinder between freely rotating on both sides or coupled on one side. Supplied without a reader unit the basic mechatronic body can be fitted with a variety of reader heads. mifare DESFire EV1 or LEGIC advant technology are preferred when printable passive ID cards are used. Active VLF is the better choice if user convenience is a priority. In that case it is possible to install all electronic components in the protected area to guarantee a high level of physical security.

### Your benefits at a glance:

- **Easily dismantled**
- **Modular, extendable in 5 mm increments**
- **Reader technology replaceable at any time**
- **Compatible with reader technologies such as LEGIC advant, mifare classic, mifare DESFire EV1, active VLF technology and so forth.**
- **User convenience function: Freely rotating on both sides or coupled on one side**

### Technical data

#### Dimensions:

Electronic side: Ø 40 mm  
Mechanical side: Ø 32 mm

#### Standard body lengths:

30/30 mm  
30/45 mm, 30/60 mm,  
45/30 mm, 60/30 mm

#### Weight:

0.5 kg with 30/30 mm

#### Material:

Brass  
Die cast zinc

#### Colours:

Chrome pearl  
Nickel satinised  
Gold

#### Protection class:

IP54, optional IP65

#### Operating temperature:

-20...+50°C

#### Relative humidity:

5...95%, non-condensing

#### Power requirement:

1x CR2 battery

#### Battery life:

5 years / up to 100,000 operations, depending on the reader technology

#### Body extension:

In 5 mm increments; ETM 5 up to 15 mm on both sides

#### Optional:

Panic reset